



1.1.1



1.1.1



:	7
	7
	8
	9
	11
	13
	14
	14
	16
	18
	19
	22
	24
	28
	28
	30
	32
	35
	35
	36
	38
	40
	40
CBD	42
	45
CCUS	46





1111



.....	49
.....	49
.....	49
.....	51





上海大学



中国政法大学





上海大学



中国政法大学





上海大学



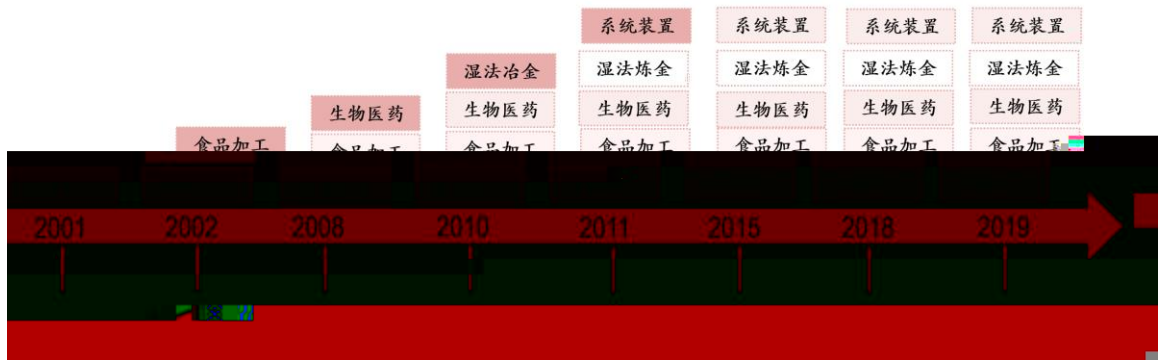
中国政法大学





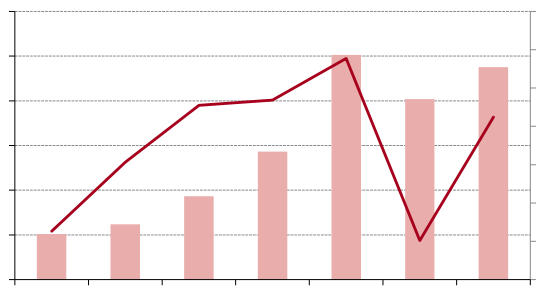
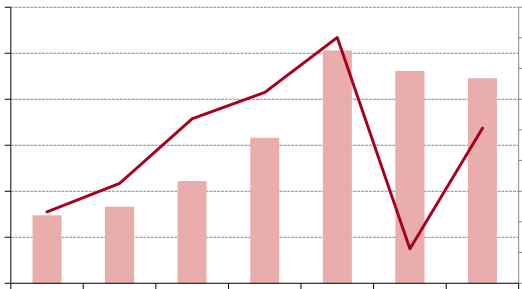
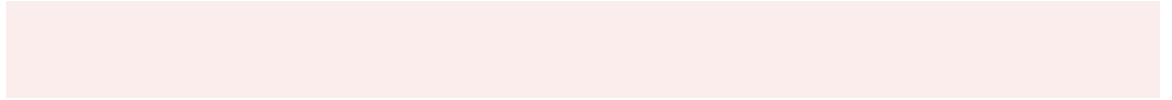
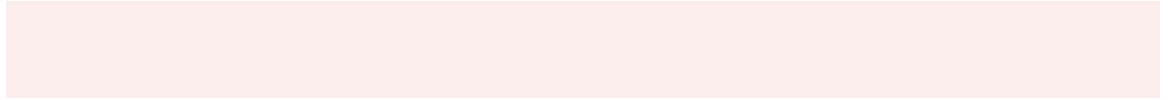
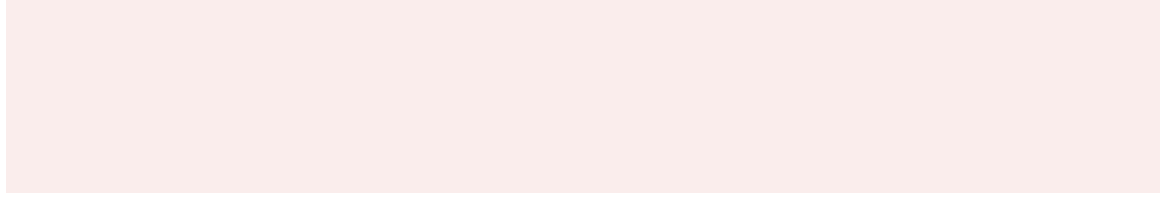
中微高科

：



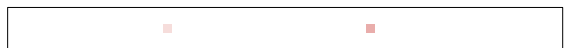
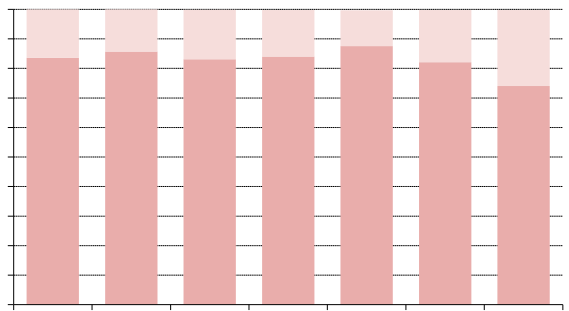
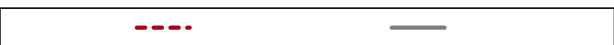
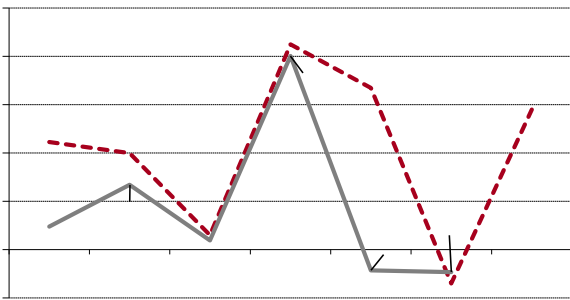
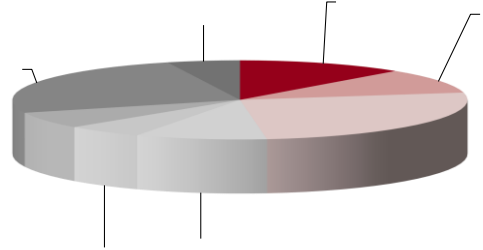
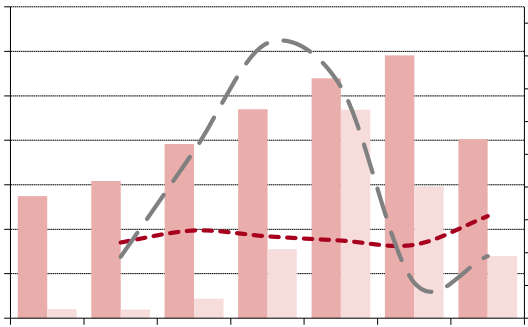


中國證券



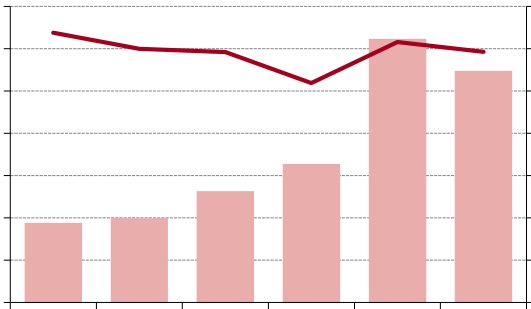
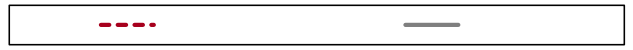
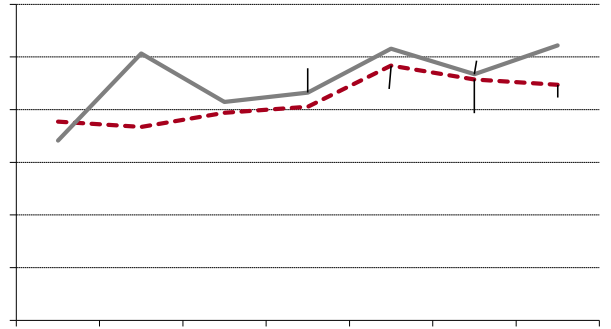
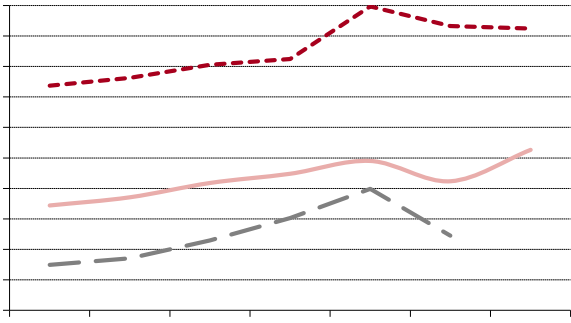
Legend box with two red dashes

Legend box with two red dashes

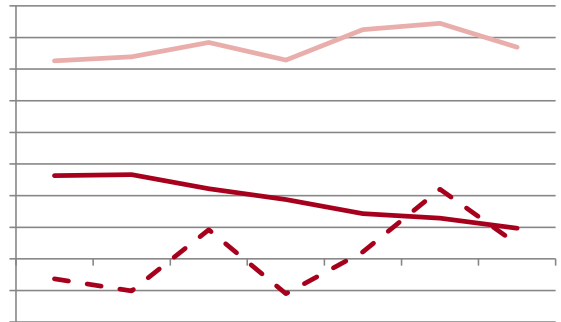


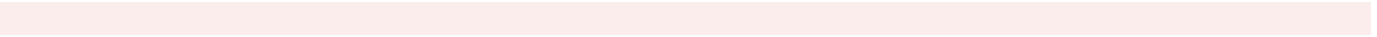
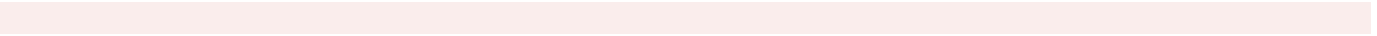


中國證券



()



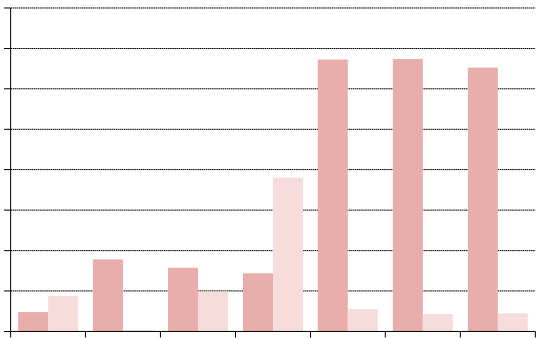
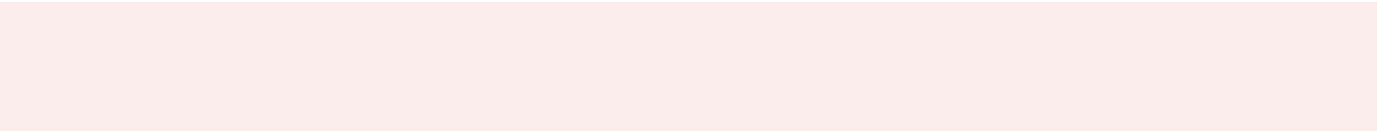


64//

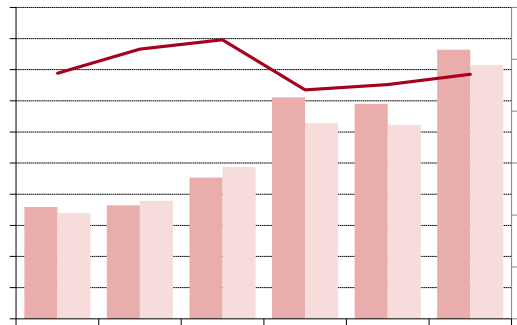
1/08

64// .

1/1/



Legend box for the first chart



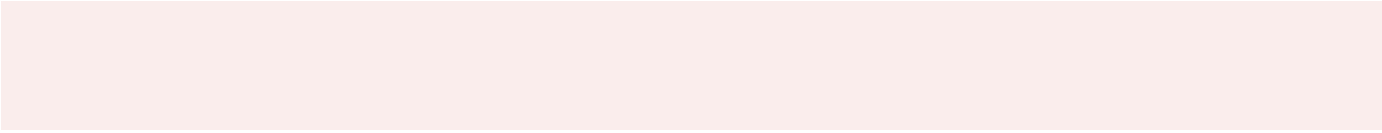
Legend box for the second chart



北京

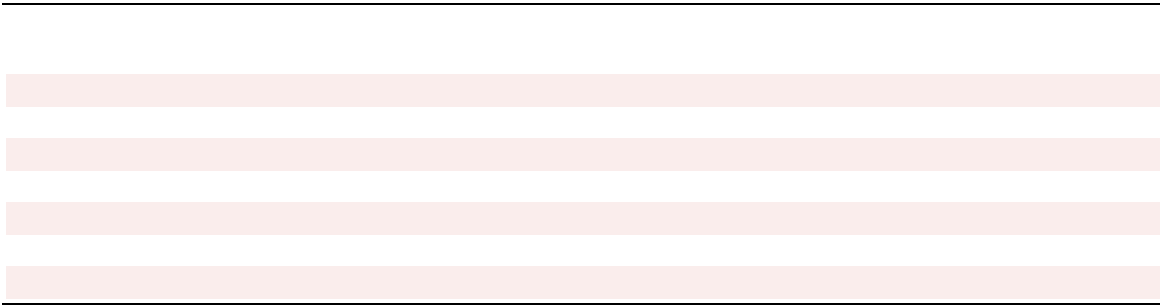


中国政法大学



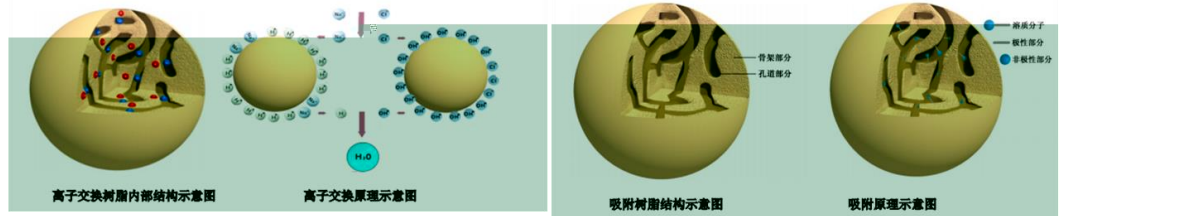


中国医药



离子交换树脂：应用领域例如硬水软化

吸附树脂：应用领域例如污水处理、生物医药等

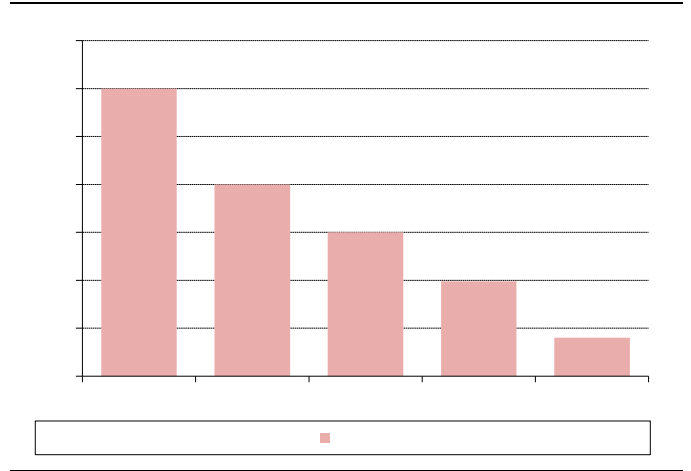
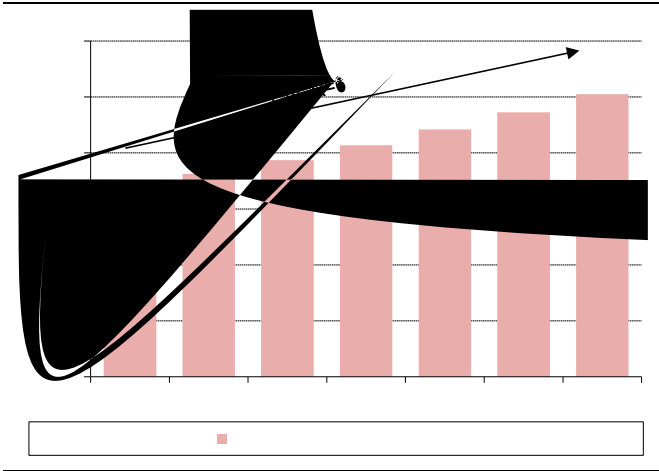
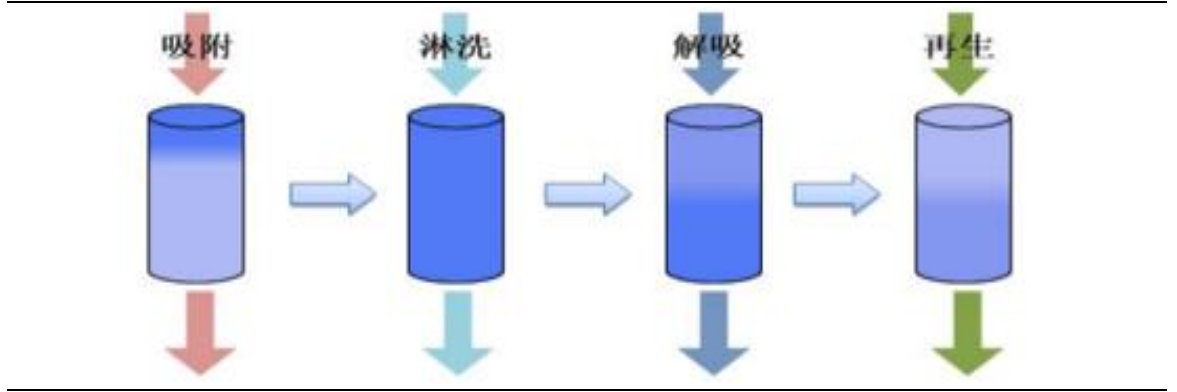


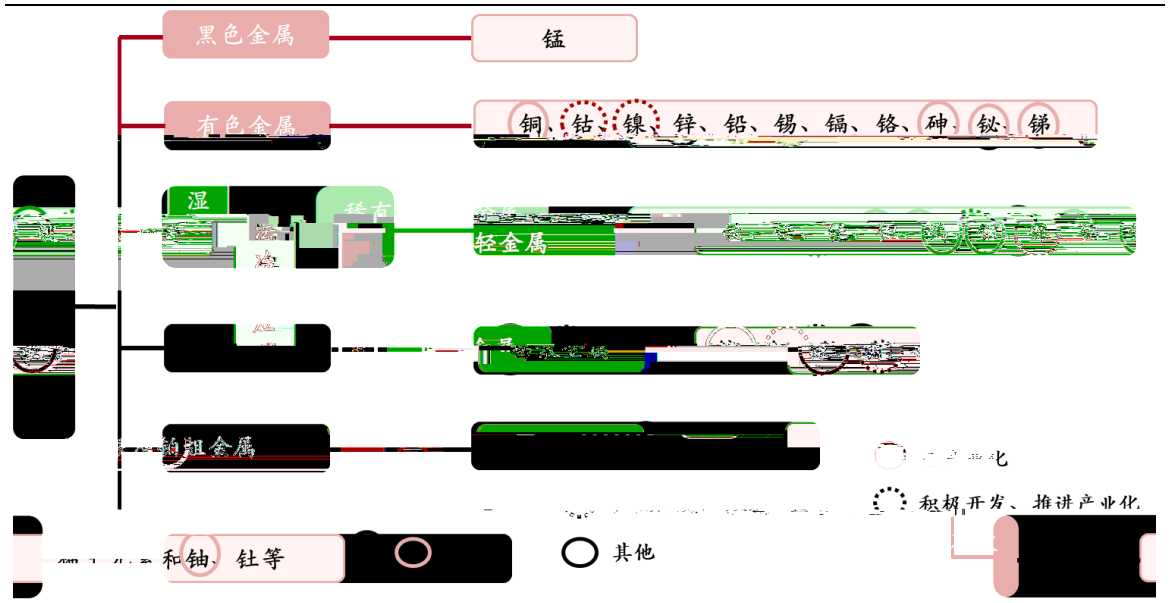
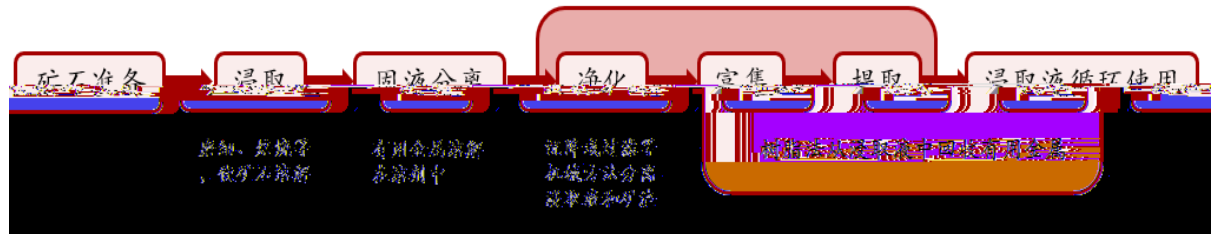
药领域

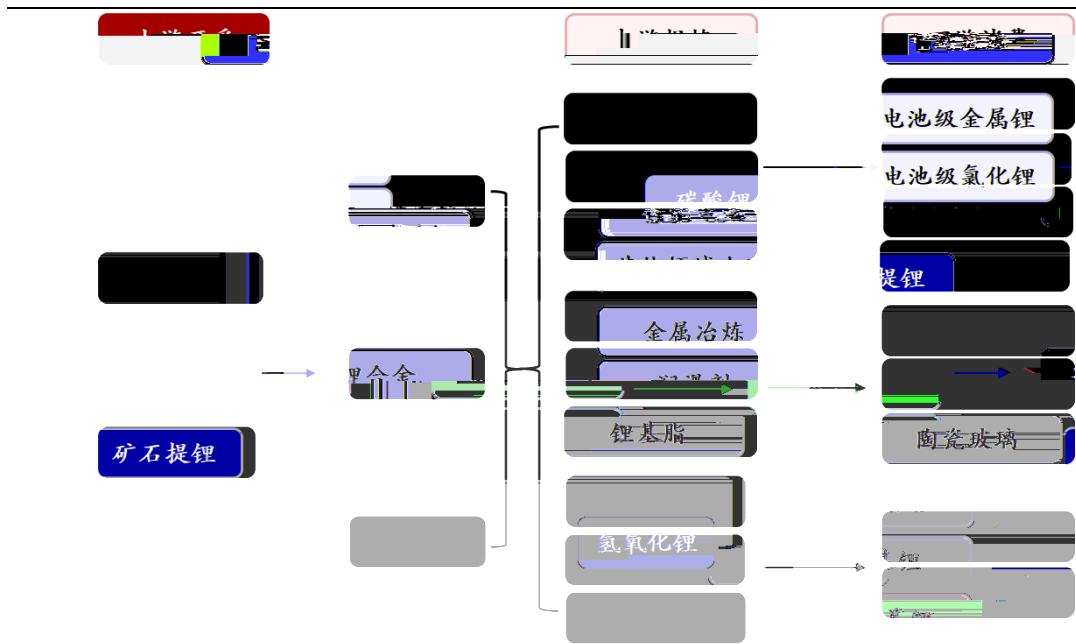
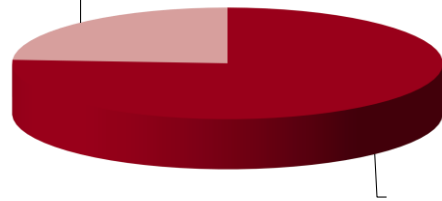
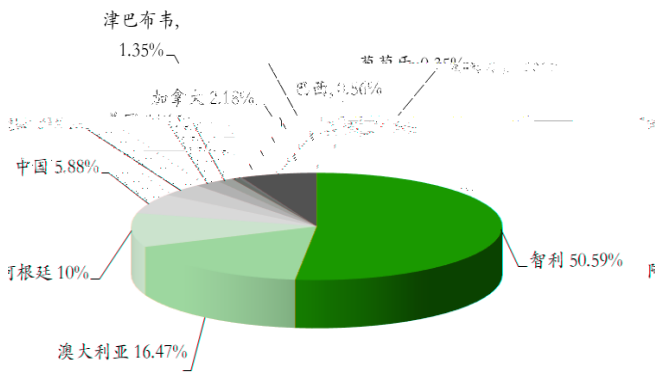
螯合树脂：应用领域例如湿法冶金等

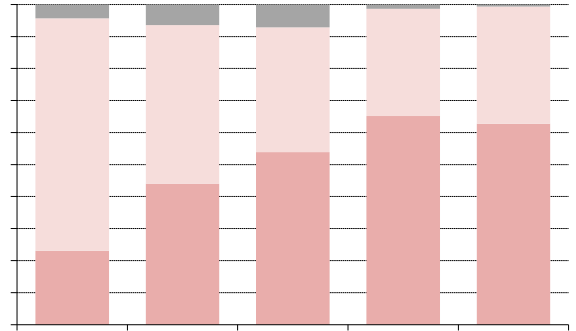
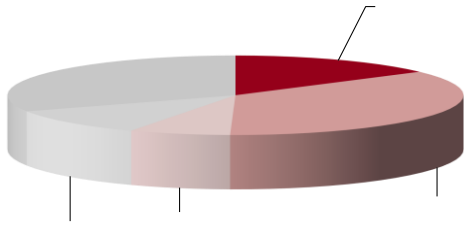
酶载体树脂：主要应用于医



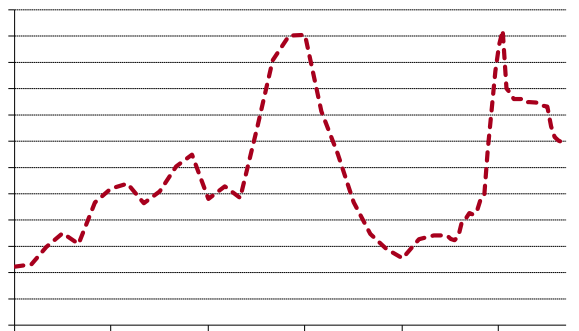
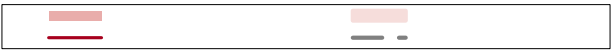
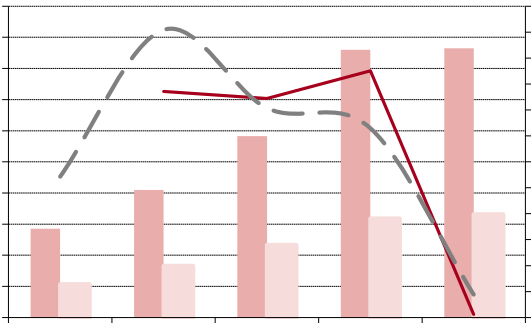
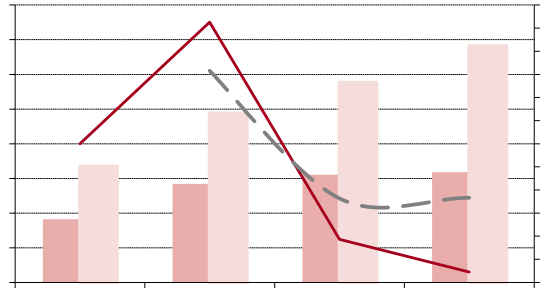
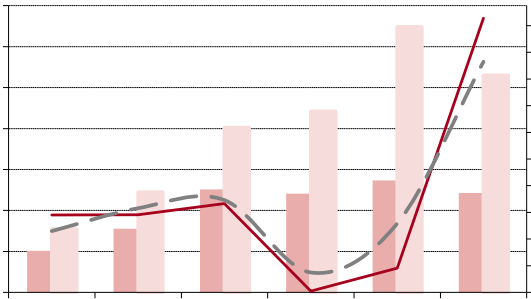


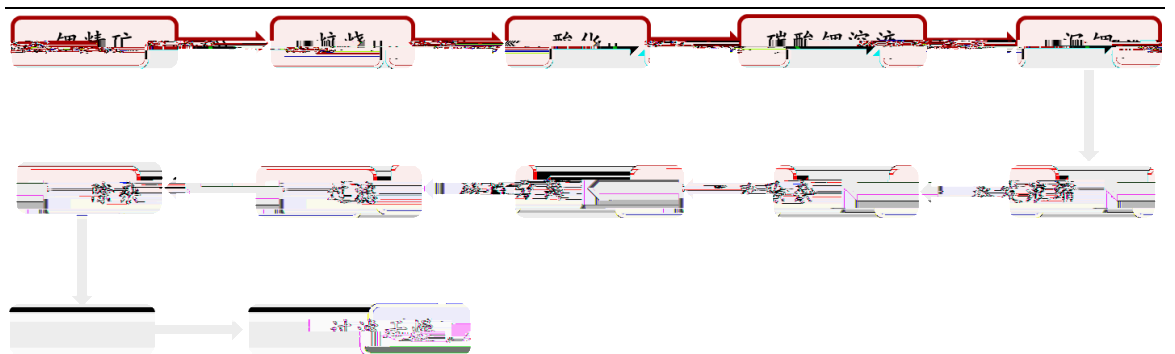
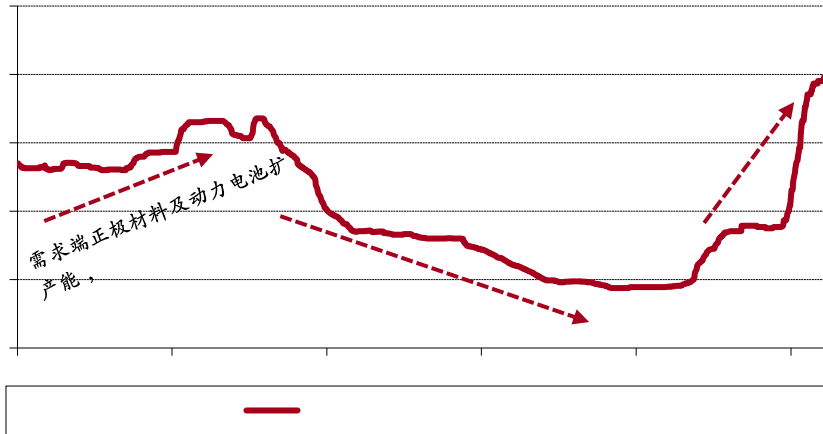


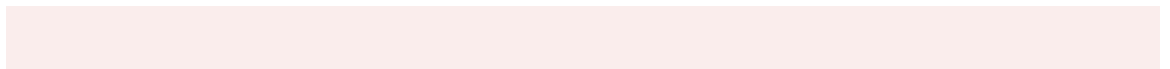
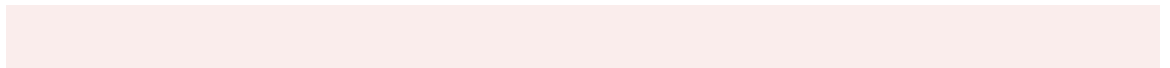
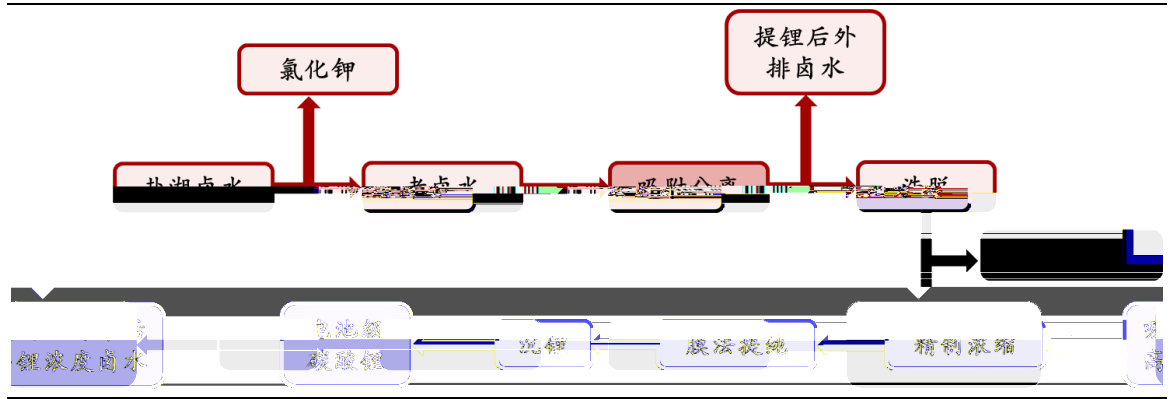




Placeholder for text content, consisting of ten horizontal lines.





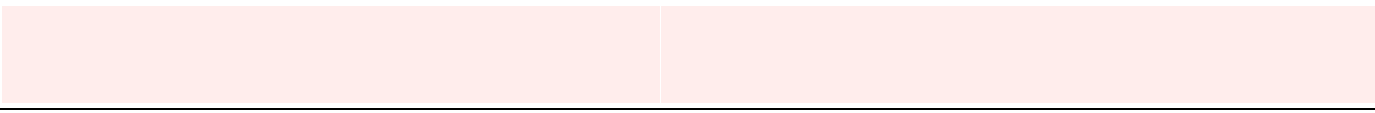
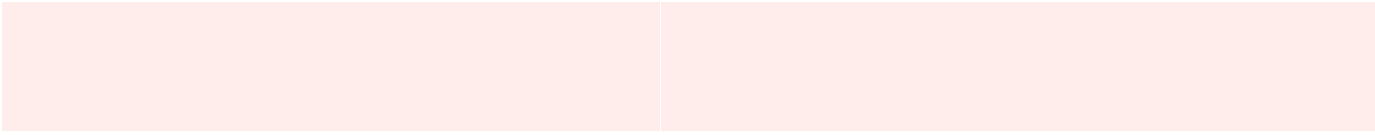
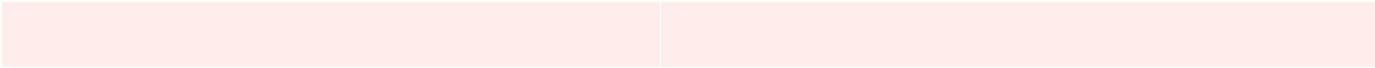




北京



中国政法大学

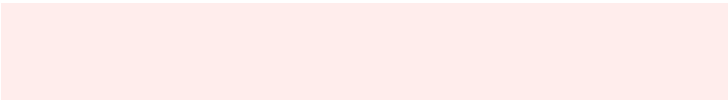
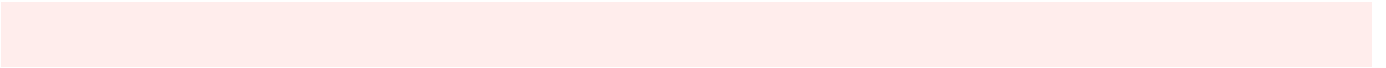
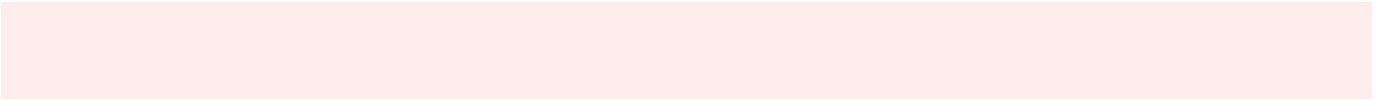
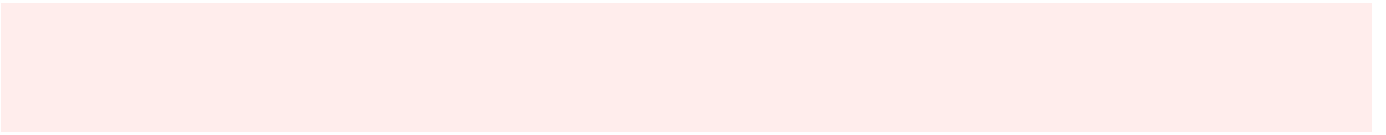




中国地质大学

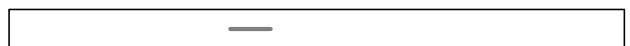
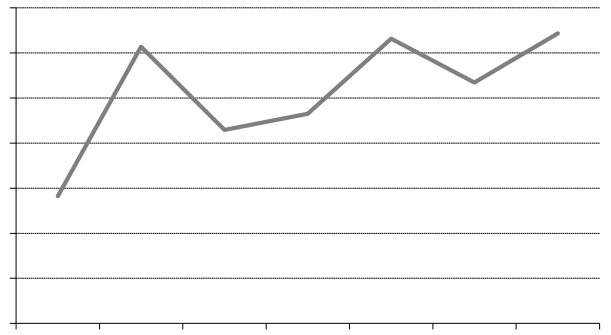
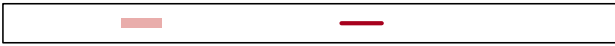
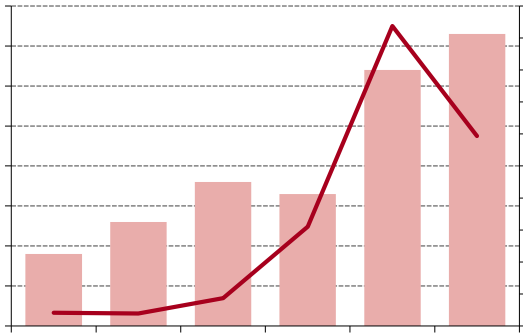


中国地质大学





中國證券

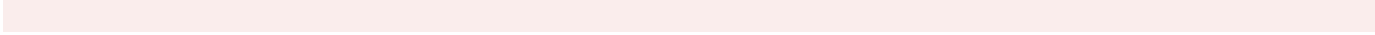




北京



中国大学





北京



中国

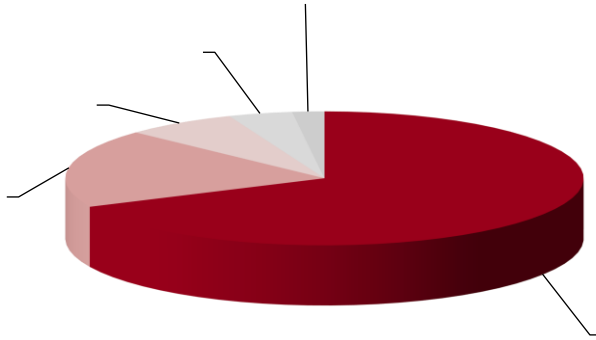




南京师范大学

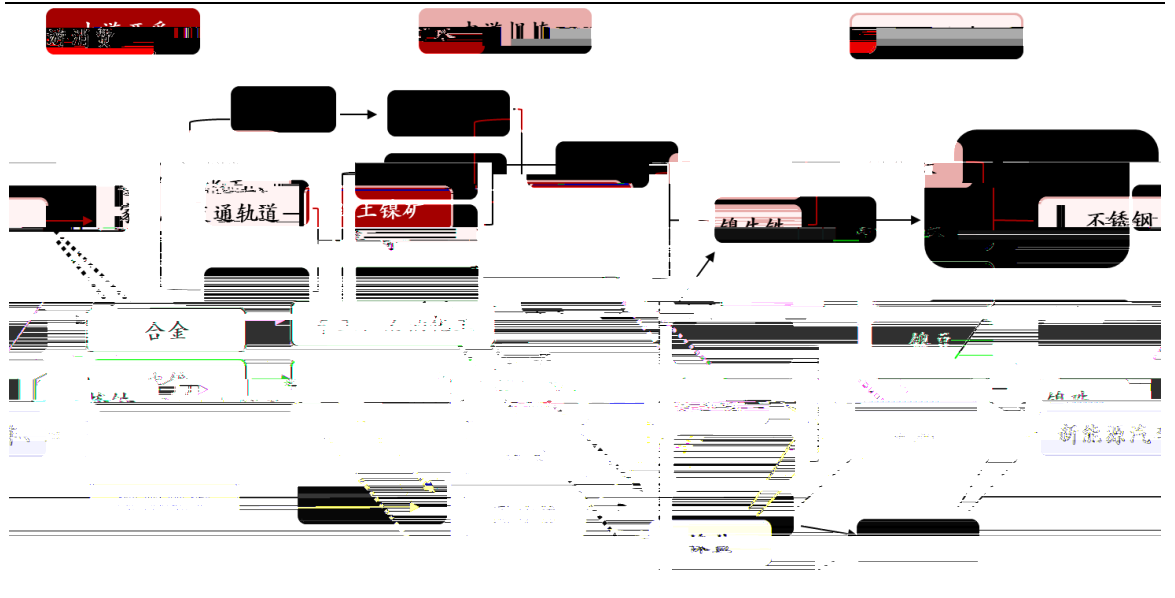
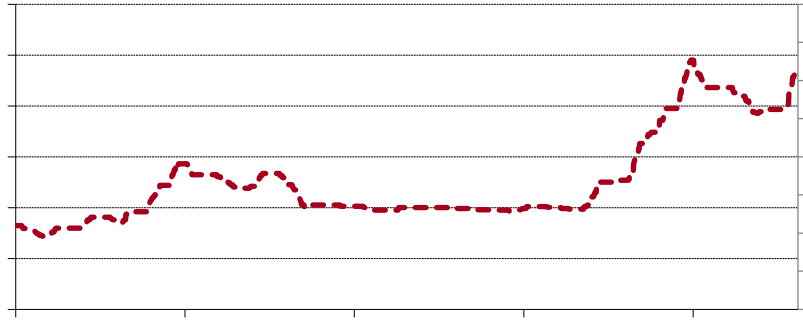


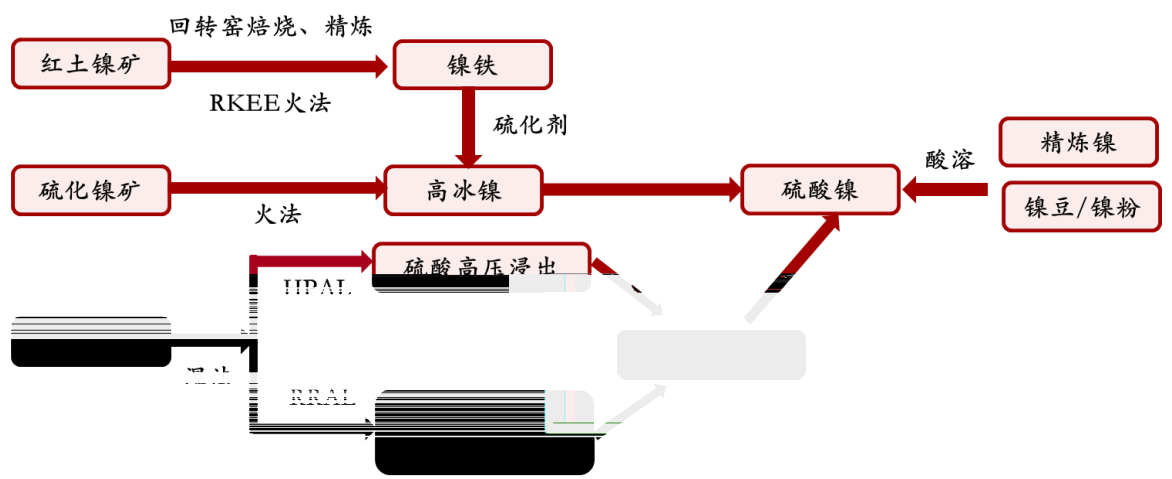
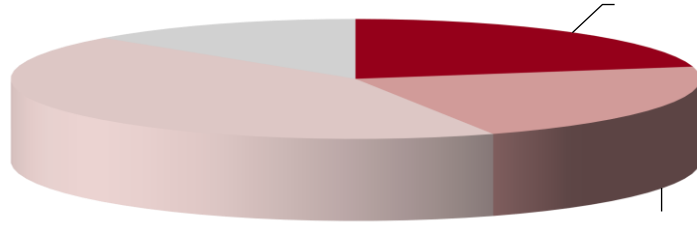
金陵分校





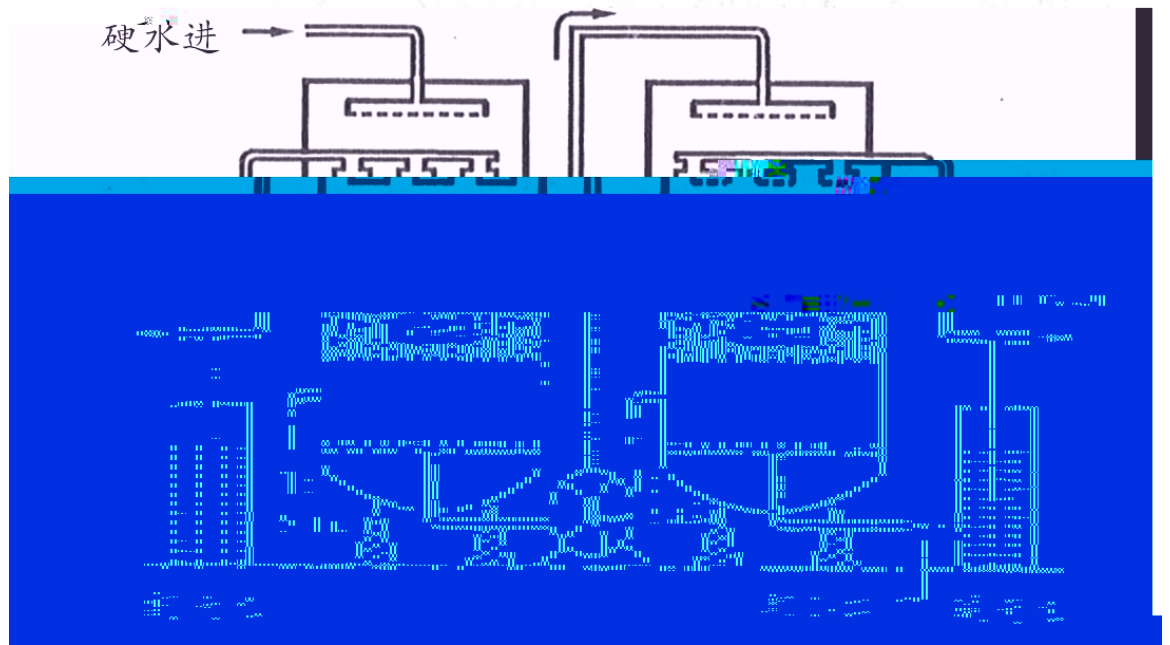
安徽证券

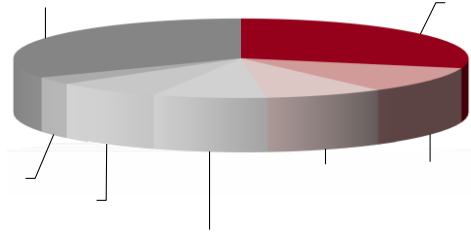
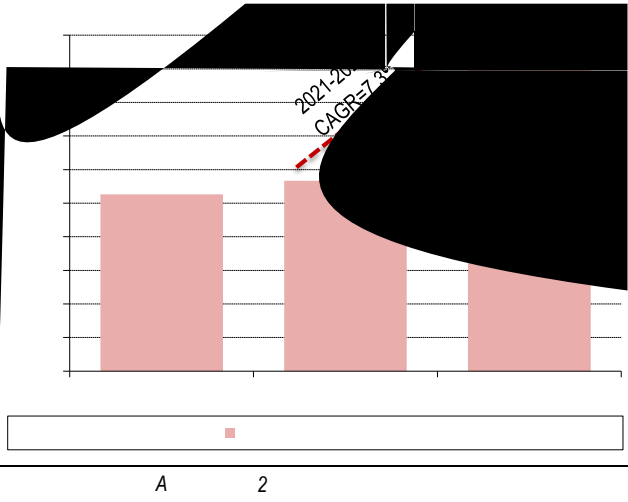






硬水进





°C

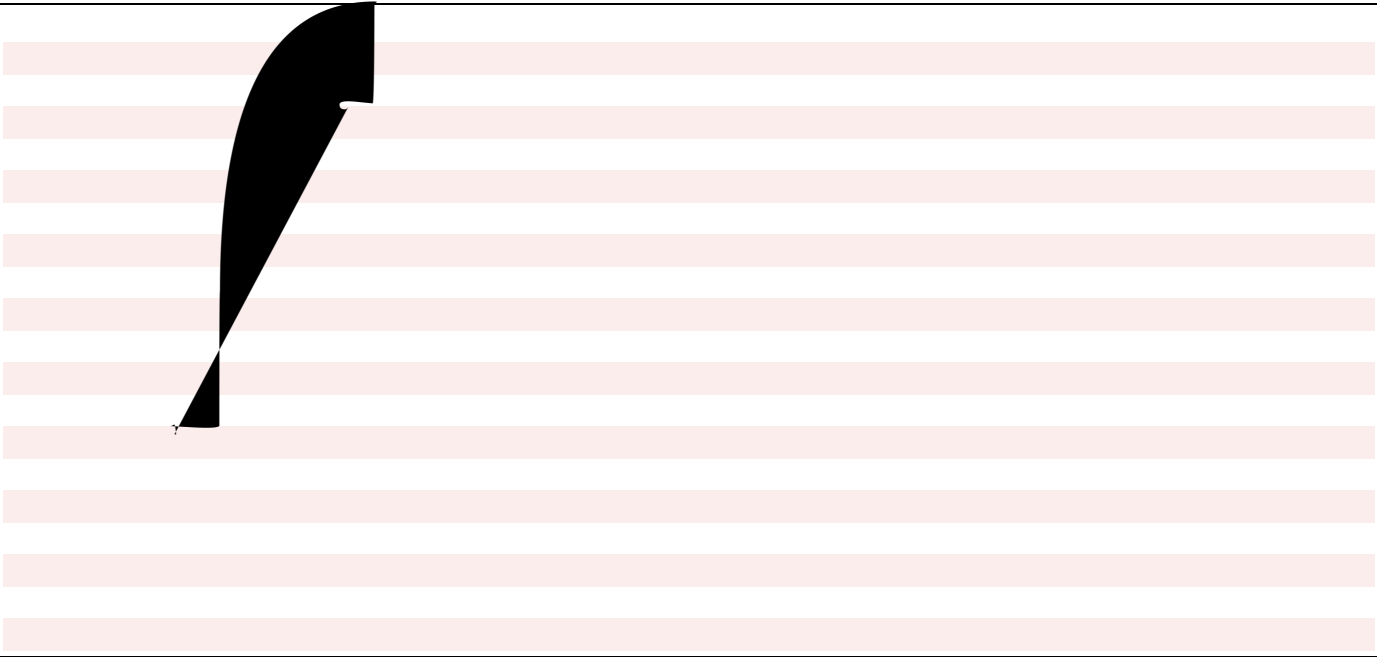




南京信息工程大学



南京信息工程大学

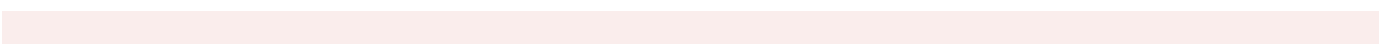




上海财经大学



中国注册会计师





北京工商大学



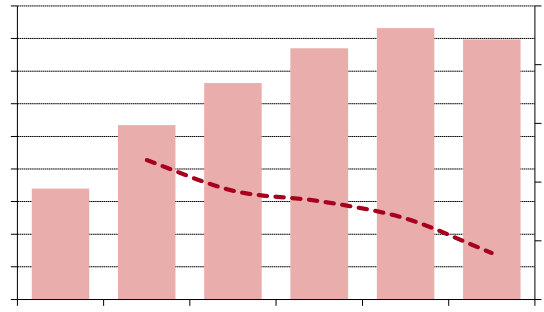
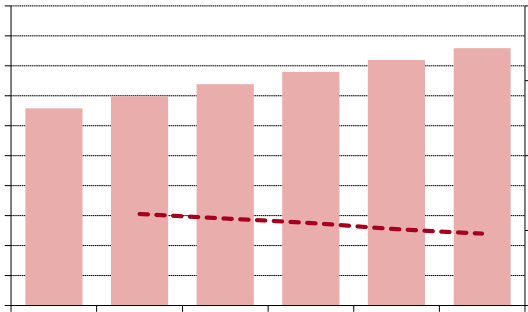
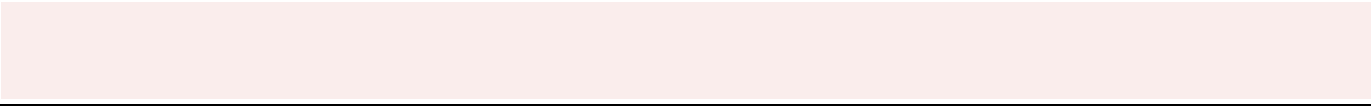
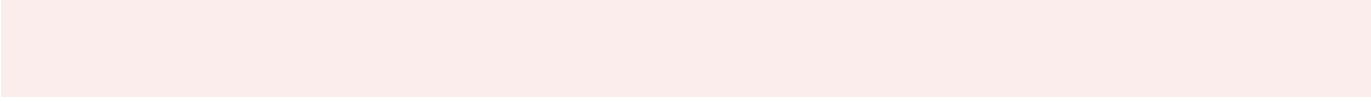
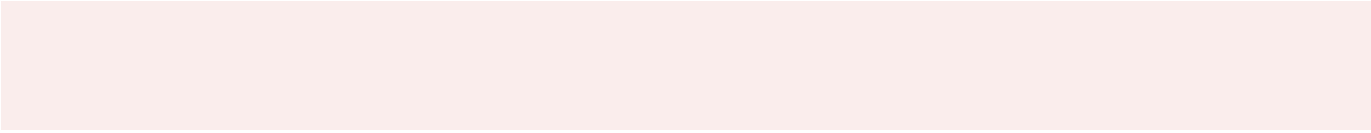
中国大学网

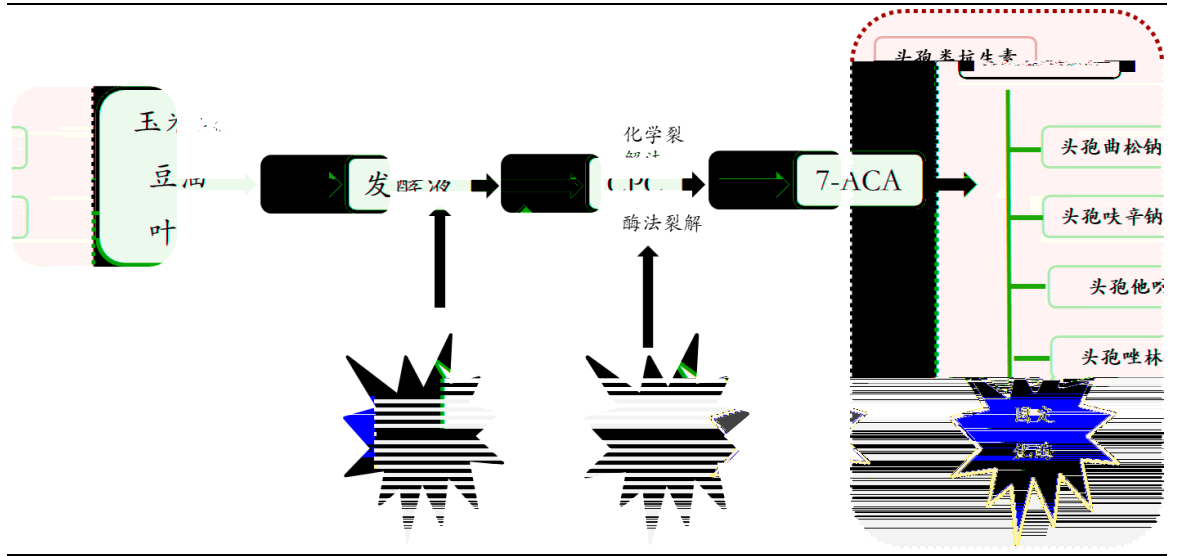


中国地质大学



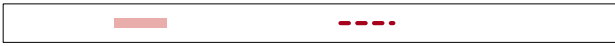
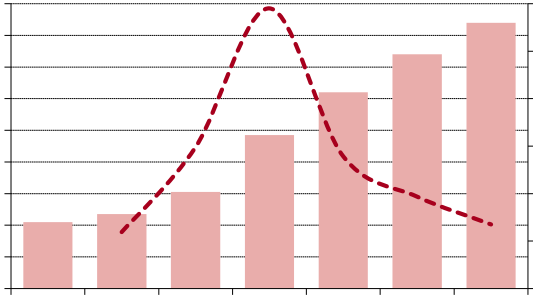
中国地质大学



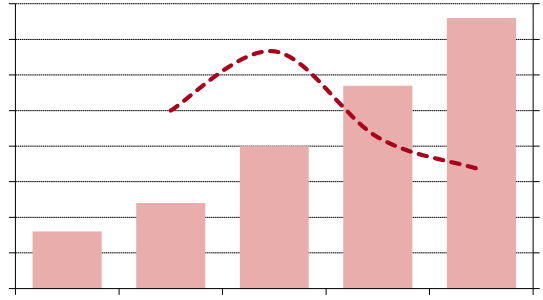


CBD

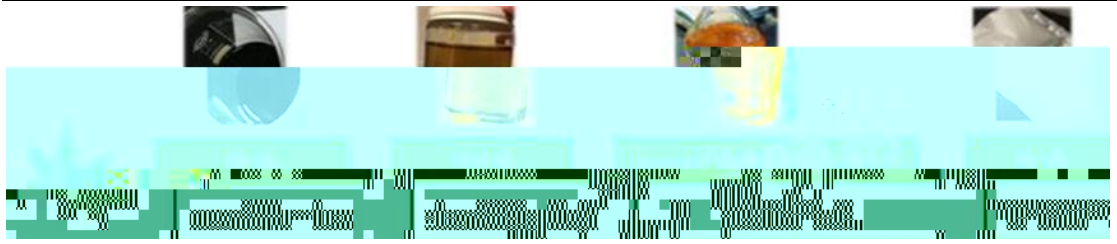


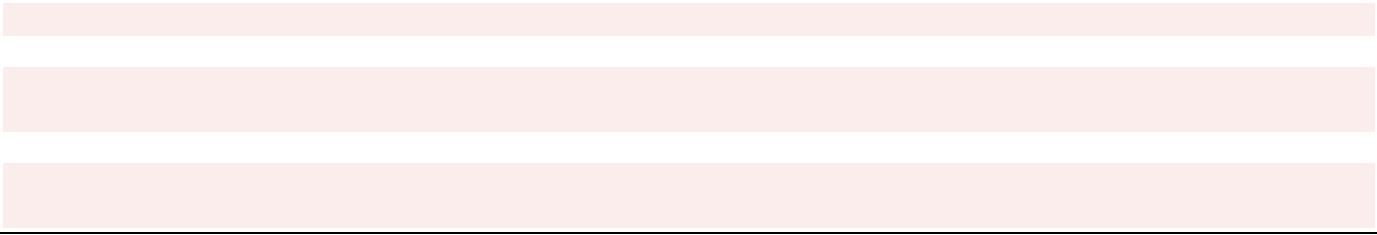


A 2 7

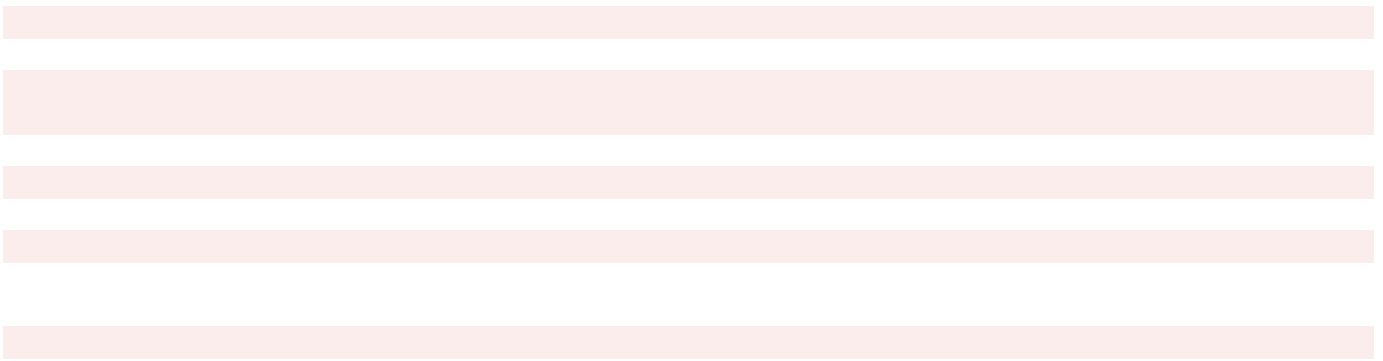
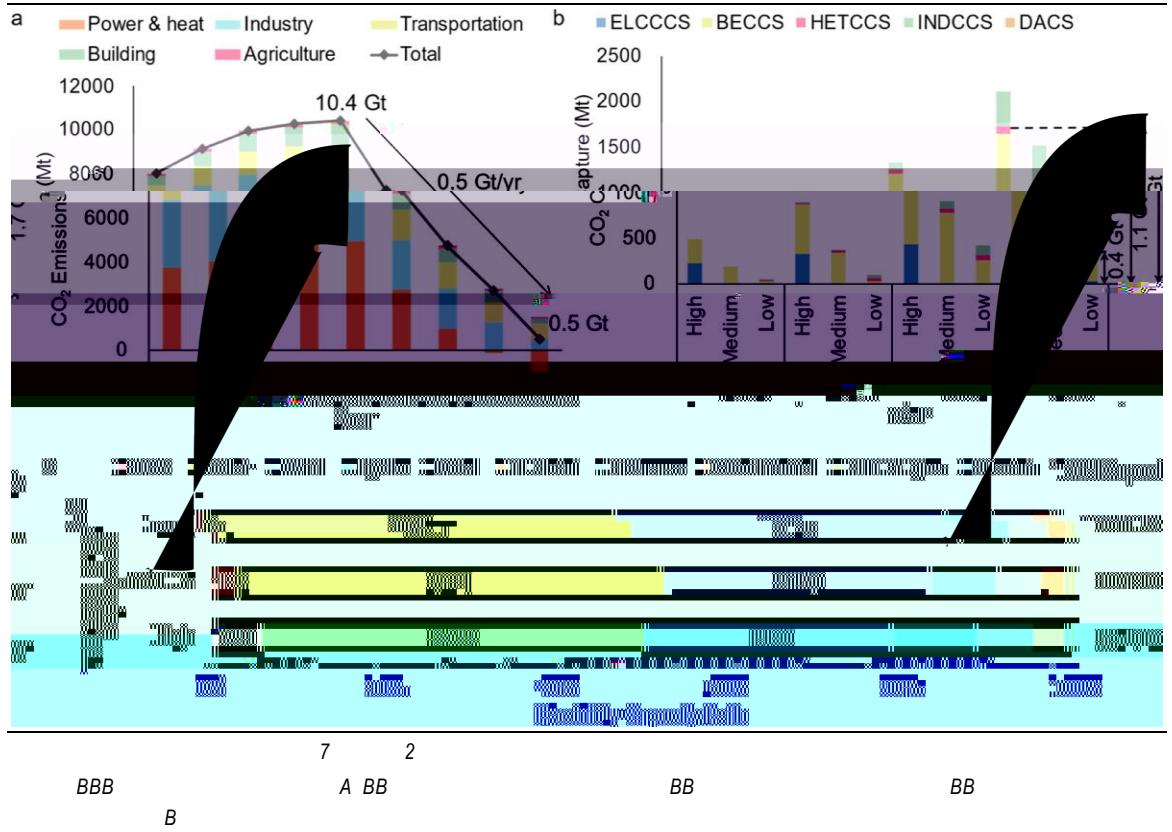


1/08





CCUS





Unit 10



Unit 10

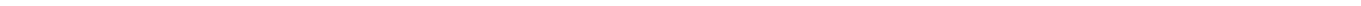
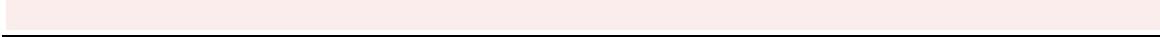
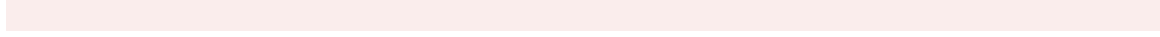
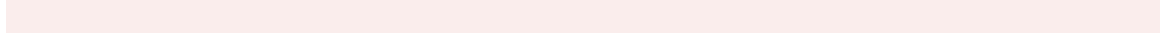
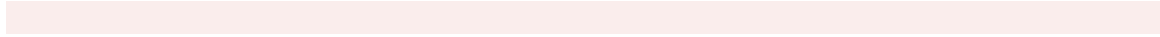
Blank writing area with horizontal lines.



11111111



中國銀行





北京



中国





北京



中国





